

MID/EN14154 IMPLEMENTATION

Product & Production Certification





Introduction:

In order to get their products on the market Water Meter manufacturers under the “old approach” needed to have their product approved (Model Approval) and the meter verified (Primary Verification) after they had been produced.

Today and under the “new approach” three different ways (Modules) can be used in order to get a product approved to be used for commercial transactions.

This document describes the three possible Modules.



Module 1 (B+F):

The first Module is similar to the procedure used in the “old approach”.

The meter gets first a model approval called today a type verification. This operation is done by a notified body (a body who has been accredited to do type verification).

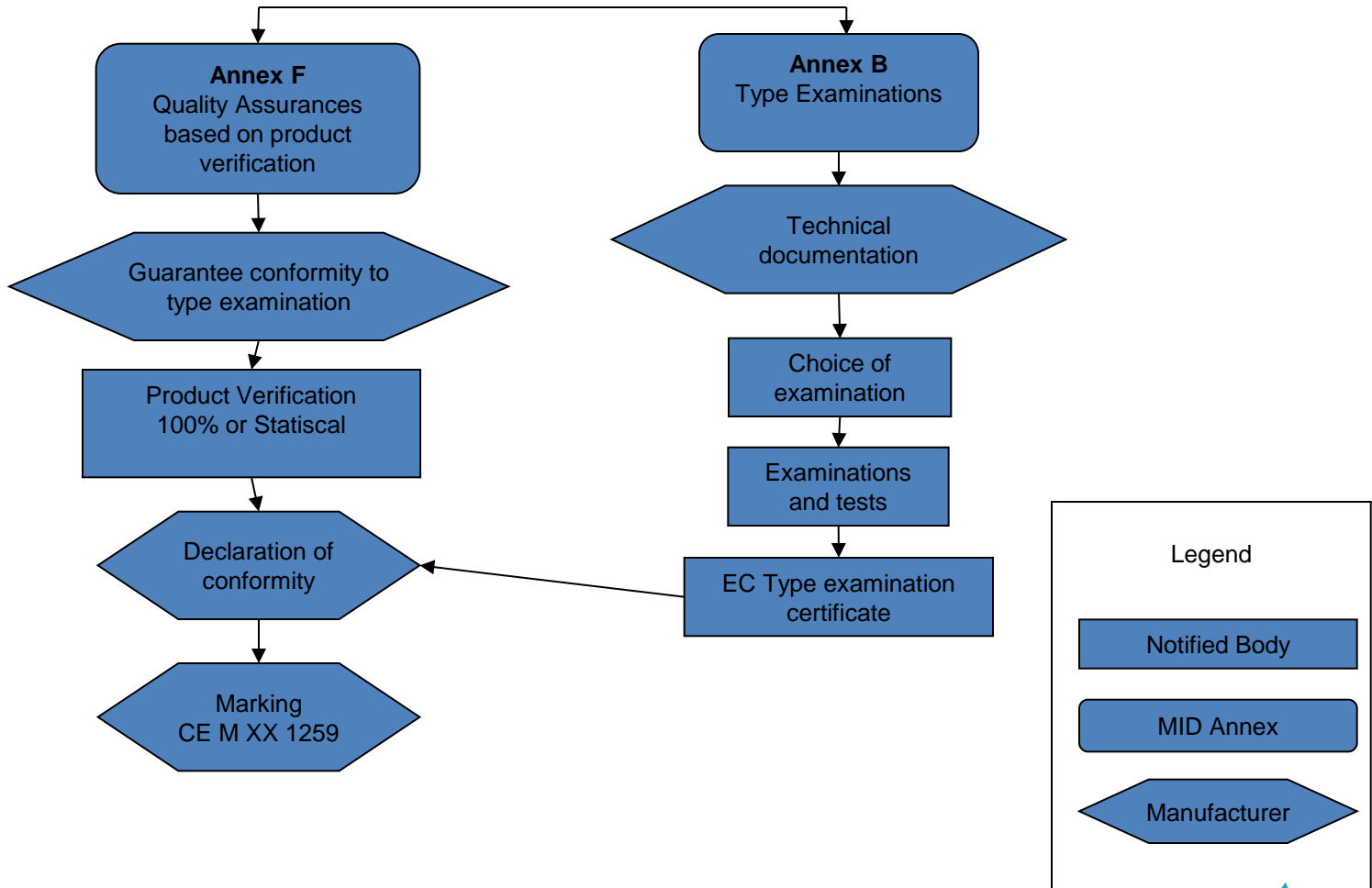
Once the meter has been produced it is verified by a notified body who will then stamp the meter.

Next slide shows the schematic of the procedure including the different bodies involved.



- "B+F"

Typical Conformity Assessment





Module 2 (B+D):

The second Module adds the quality assurance certification process to the verification.

The meter gets first a model approval called today a type verification. This operation is done by a notified body (a body who has been accredited to do type verification).

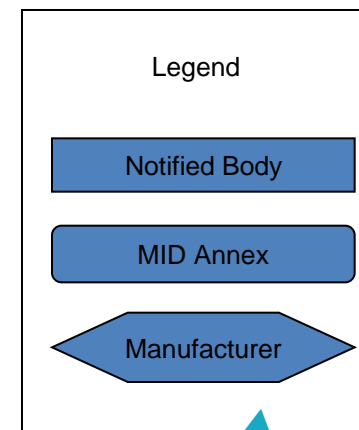
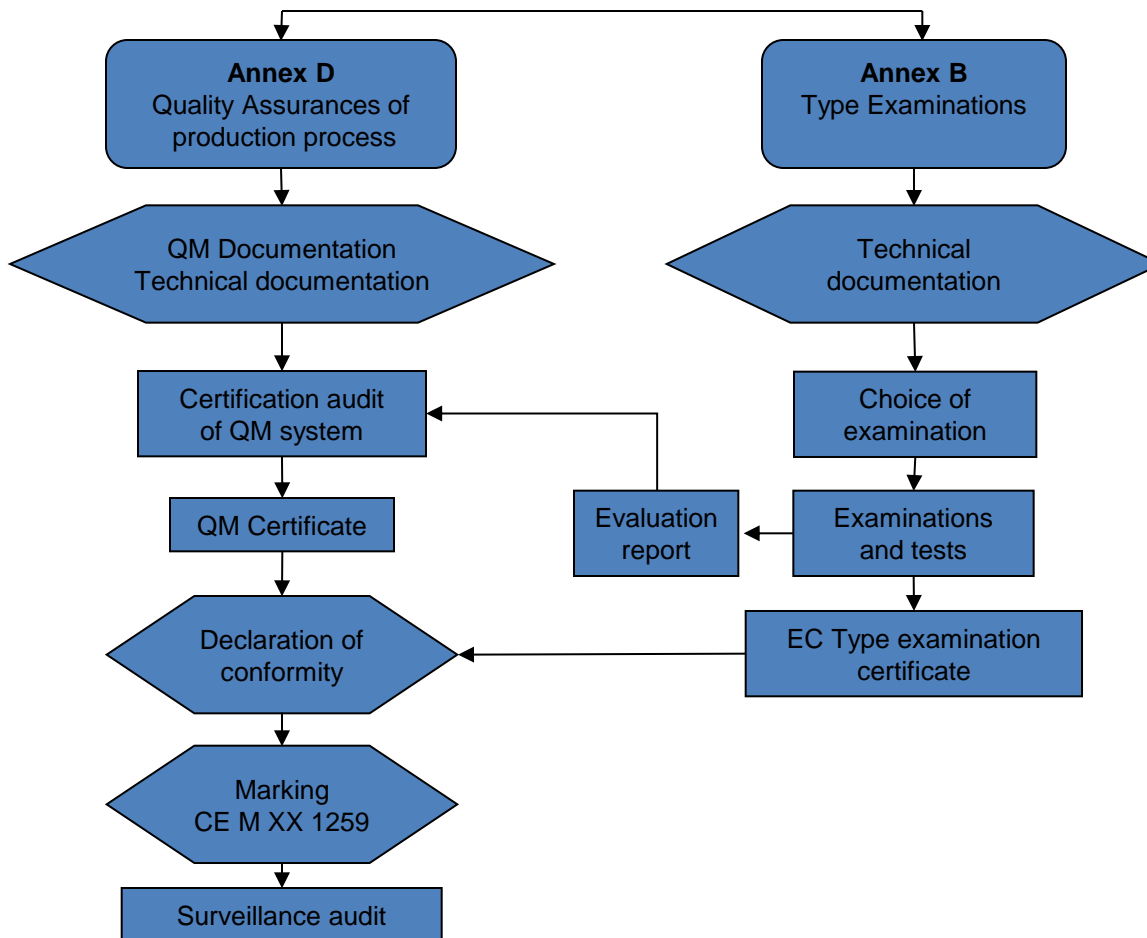
Once the meter has been produced it is verified under the quality system of the manufacturer who will then stamp the meter.

Next slide shows the schematic of the procedure including the different bodies involved.



- “B+D”

Typical Conformity Assessment





Module 3 (H1):

The third Module makes full use of the ISO 9000 certification of the Manufacturer.

It request a full certification of the manufacturer's R&D, Production and final verification processes.

In such an environment the Manufacturer is allowed to make his own type approval and final verification including the stamping of the product.

Next slide shows the schematic of the procedure including the different bodies involved.



Typical Conformity Assessment Total Quality Assurance & D&D control

- "H1"

